

REDFSCAN mini™

Indoor only RLS-2020I



The REDSCAN mini RLS-2020I is an indoor IP/PoE laser scan detector providing 20 x 20 m vertical or horizontal detection area.

The RLS2020I helps protect assets, equipment, walls and ceilings by creating an invisible laser wall and detecting any intrusion breaching it.

Its compact, cosmetic and versatile design makes it very easy to install and covers many different configurations.

In addition to dry contacts, the RLS2020I generates REDWALL Event Code (ASCII format) that is already integrated with most VMS platforms.

Not impacted by any lighting conditions, the RLS-2020I will act as a trigger to enhance video surveillance or a wide range of security systems.



FEATURES

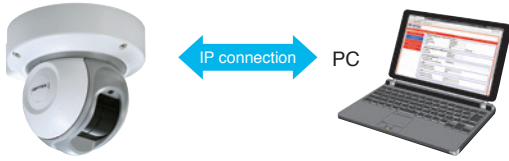
- 20m x 20m (65ft. x 65ft.), 95 degree detection area
- Vertical and Horizontal detection modes
- Multi-angle Adjustment Shell Structure (M.A.S.S.)
- Unique detection algorithm
- Automatic area setting function
- Advanced area setting
- 4 adjustable detection areas when connected via IP
- 3 outputs can be assigned for analogue connections : alarm, trouble, tamper (configurable)
- Compatible with Power over Ethernet
- Paintable housing

SPECIFICATIONS

Model	RLS-2020I
Installation location	Indoor
Detection method	Infrared Laser Scan
Laser protection class	Class 1
Power input	10.5 to 30 VDC, PoE (IEEE802.3af/at compliant)
Current draw	500mA max. (12 VDC), 250mA max. (24 VDC), 6W max. (PoE)
Mounting method	Ceiling mount, Wall mount, Tripod mount, Pole mount (option), Recess mount (option)
Detection area	20 x 20 m, (approx. 65 x 65 ft.), 95 degrees
Detection range	Radius 1 to 21m (approx. 3.0 to 68 ft.) at 10% reflectivity
Detection resolution/Response time	0.25 degrees / within 75 ms to 1 minute
Mounting height (Vertical mode)	2 m (6.7 ft.) or higher
Communication port	Ethernet RJ-45 10BASE-T / 100BASE-TX (Auto negotiation)
Protocol	UDP, TCP/IP (Redwall Event Code), Http (Web setting), SNMP
Output	3 outputs, 28 VDC 0.2 A max. N.O./N.C. Selectable (3 from Master alarm, Zone outputs, Trouble, Tamper)
Input	-
Alarm period	Approx. 2 s delay timer
Operating temperature	-40 to 50 C degrees (-40 to 122 F degrees)
IP rating	IP66
Dimensions (HxWxD)	146 x 160 x 160 mm (5.8 x 6.3 x 6.3 inch)
Weight	1.0 kg (2.2 lb)

* Specifications and design are subject to change without prior notice.

EASY SETUP AND CONNECTION



PoE enabled Redscan mini generates Redwall Event Codes (REC) to all compatible VMS and NVR., through a single cable.

Web browser: Basic setting of detection areas without external program

Optional REDSCAN MANAGER software: Detailed setting, including detection area and shapes



INSTALLATION EXAMPLE

CEILING MOUNT



The multi-angle adjustment shell structure allows flexible installation on ceiling or wall for vertical and horizontal detection area.

WALL MOUNT

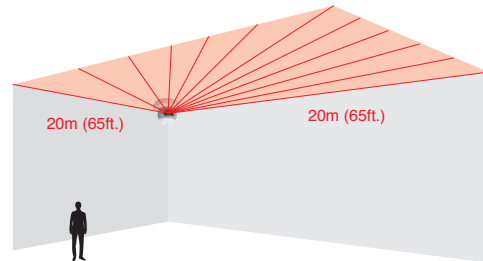
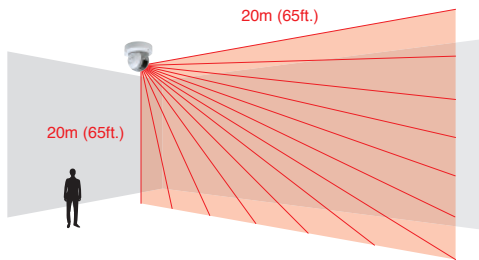


OPTION

Optional Recess mount bracket RLS-RB



DETECTION AREA



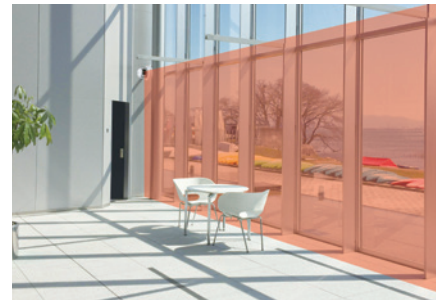
APPLICATIONS



Skylight protection at Public facility / Warehouse

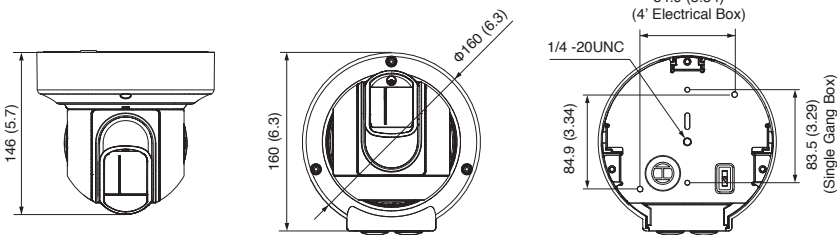


Ceiling protection at Data center



Window/Wall protection at Commercial facility/Office

DIMENSIONS



Unit:mm(inch)

ACCESSORIES

- LAC-1 : Laser Area Checker
- RLS-PB : Pole mount Bracket
- RLS-RB : Recess mount bracket
- RLS-LW : Laser Window



OPTEX CO., LTD. (JAPAN)

URL: <http://www.optex.net/>

OPTEX INC. (U.S.)

URL: <http://www.optexamerica.com/>

OPTEX DO BRASIL LTDA. (Brazil)

URL: <http://www.optex.net/br/es/sec/>

OPTEX (EUROPE) LTD. / EMEA HQ (U.K.)

URL: <http://www.optexeurope.com/>

OPTEX TECHNOLOGIES B.V. (The Netherlands)

URL: <http://www.optex.eu/>

OPTEX SECURITY SAS (France)

URL: <http://www.optex-security.com/>

OPTEX SECURITY Sp.z o.o. (Poland)

URL: <http://www.optex.com.pl/>

OPTEX PINNACLE INDIA, PVT., LTD. (India)

URL: <http://www.optex.net/in/en/sec/>

OPTEX KOREA CO.,LTD. (Korea)

URL: <http://www.optexkorea.com/>

OPTEX (DONGGUAN) CO.,LTD. SHANGHAI OFFICE (China)

URL: <http://www.optexchina.com/>

OPTEX (Thailand) CO., LTD. (Thailand)

URL: <http://www.optex.net/th/th>